

PRO MESH SERIES

SinoBlue's "Pro Mesh" Continues to Drive Leg Protection Innovation

SinoBlue invented Pro Mesh engineered material for use in a series of protective equestrian boots that are constantly evolving to better protect the horse. Used for the outer layer of protective horse boots, Pro Mesh material acts like 'flexible horse armor' and offers an ultimate combination of breathability/cooling, impact and abrasion protection, support and flexibility, a totally waterproof design as well as RoHS/REACH environmentally Green materials .

What is Pro Mesh?

Invented by SinoBlue, Pro Mesh material is RoHS/REACH compliant German quality BASF® TPU directly injected into a strong but breathable stretch fabric mesh. Pro Mesh is created during the injection molding process under high heat and pressure. No glues or adhesives are used. Synergy was attained resulting in a strong composite material that protects from impacts and abrasion, will not separate, is extremely durable, totally breathable, will not let sand and dirt pass through, is waterproof and provides great flexibility with a slight stretch.

Pro Mesh Advantages

- ✓ **Protects, Supports, Flexible** - Pro Mesh material falls between a hard shell boot and a "soft fabric" boot. The TPU and integrated fabric work together for great flexibility plus tremendous strength. The synergy attained is key to the Pro Mesh design. The material can be made harder or softer based on usage.
- ✓ **Breathable** - Pro Mesh material allows air to enter or leave boots at almost all points, but stops sand and dirt from passing through.
- ✓ **Lightweight** - Hexagonal holes were used to reduce weight but maintain protection, strength and flexibility. Honeycomb structures are nature's perfect strength-to-weight design.
- ✓ **Water Resistant and Durable** - Pro Mesh does not absorb water that can increase boot weight and contribute to slipping. All Pro Mesh boots are extremely durable, machine washable and dry quickly. The material is extremely tough, tear resistant and can withstand an amazing amount of punishment.
- ✓ **Customized/OEM Design Support** - We designed Pro Mesh material to meet our customers' product development needs. For boot development, customers can choose strike protection type and material, fasteners, inner liner material and more. Everything can be configured and manufactured to specific customer requirements.

Contact: sales@sinoblue.com

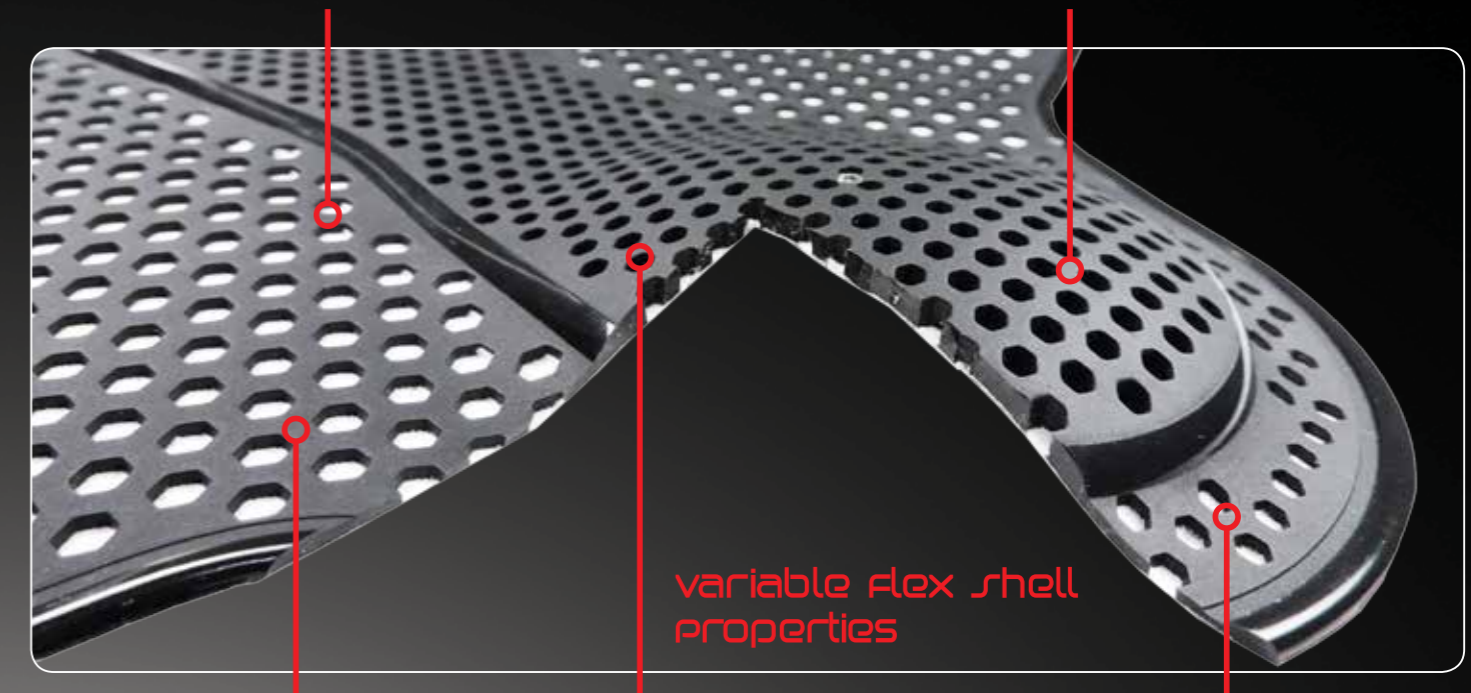
generation 3

PRO MESH SERIES

Pro Mesh Generation 3 Composite Design

TPU Injected Directly into the Threads of a Strong, Breathable Stretch Fabric Mesh for a Strong, Permanent Mechanical Bond. No Glues or Adhesives Used

Pro Mesh G3 is Shaped and Formed for a Seamless Fit

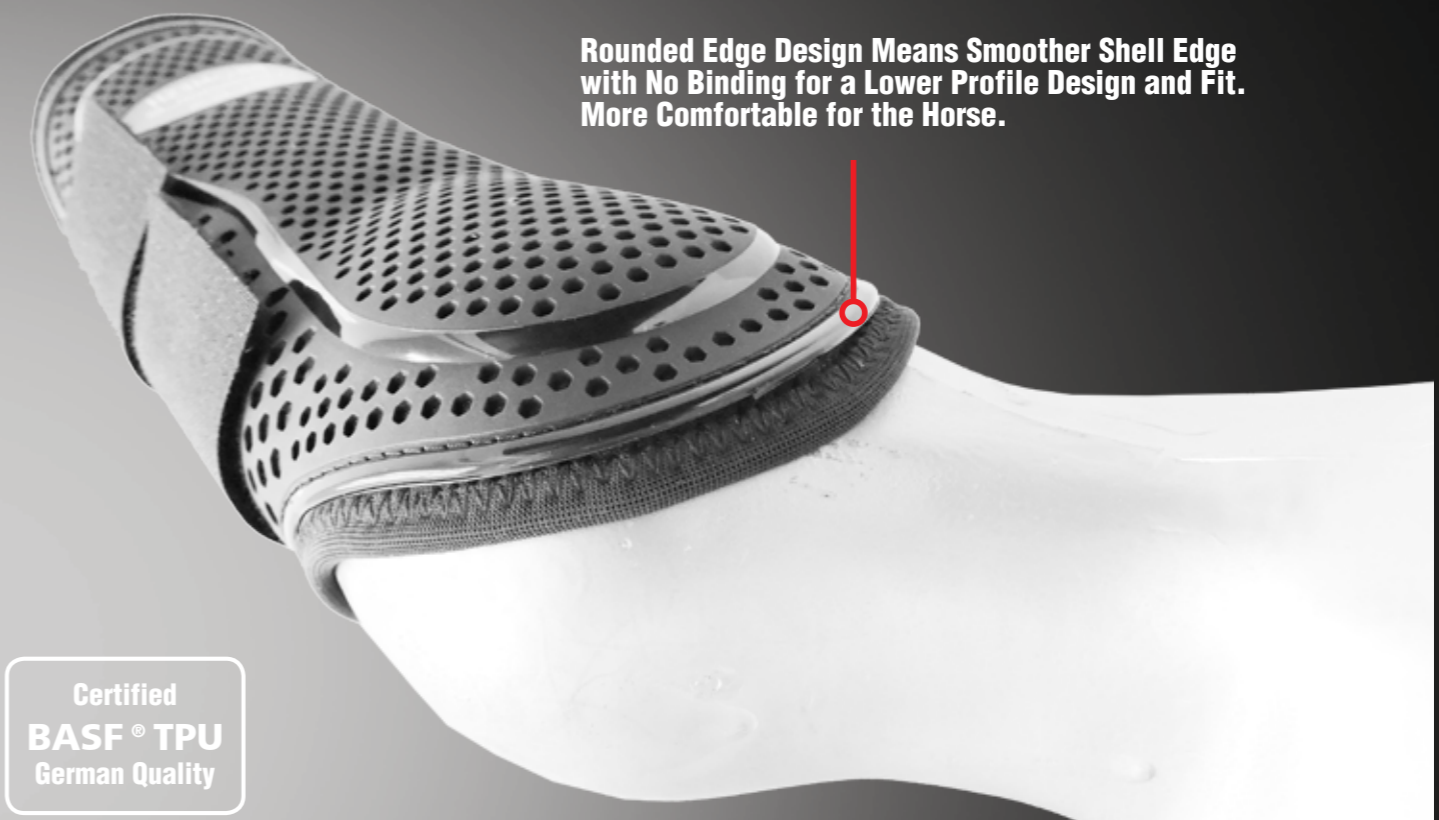


Larger Holes for Better Stretch, Flexibility and Air Flow

Smaller Holes and Thicker Material for Improved Impact Protection for Integrated Strike Guard

Medium Hole Size For Normal Flexibility and Air Flow

Rounded Edge Design Means Smoother Shell Edge with No Binding for a Lower Profile Design and Fit. More Comfortable for the Horse.



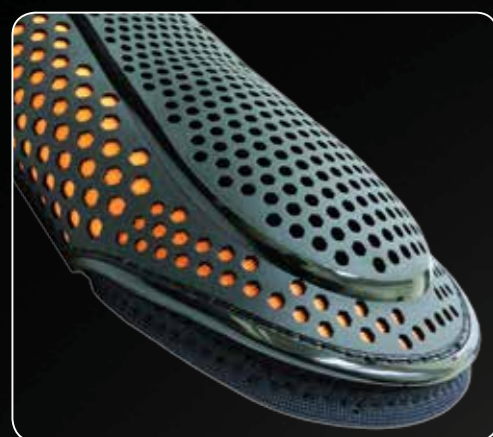
Certified
BASF® TPU
German Quality

Contact: sales@sinoblue.com

variable flex Dressage/Splint/Brushing Boot

Pro Mesh G3 Variable Flex Dressage/Splint/Brushing Boots offer versatile leg protection designed for the equestrian athlete. Based on our 'Less is More, Simpler is Better' design philosophy, Variable Flex Pro Mesh composite material was engineered to protect from impacts and strikes, reduce boot weight, offer excellent stretch and flexibility, plus 360° air flow for cooling legs. With an advanced single layer composite design, Pro Mesh material combines with a low profile, inner sock liner that moulds to the leg for a comfortable, adaptive fit while reducing unnecessary layers and weight. Waterproof materials and non-slip lining make the boots great for wet conditions.

- Pro Mesh Variable Flex Dressage/Splint SB63001 BK
 - Pro Mesh Variable Flex Dressage/Splint SB63001 WHT
- Sizes: Medium, Large and XLarge. Boots fit front or hind Legs.
Fabric Colors: Black, White, Red, Blue and others by request.
TPU Colors: Standard White, Black, any Pantone® color by request.



Integrated Strike, Excellent Protection, Less Stitching, Seamless Design, Ventilated/Breathable



Low Profile, Form Fitting/Shaped Fit, Reduces Interference/Reduces Bulkiness, Helps Keep Sand and Dirt Out of Boot

American Designed



Pro Mesh Variable Flexibility Design
Provides more Stretch and Breathability where needed. Allows better Flexion in Fetlock and Tendons

360° Protection
Good Abrasion Resistance, Dirt, Debris, Sand Spurs etc. Will Not Collect on Boot

Dressage/Splint/Brushing Boot **variable flex**

Offering 360° protection with a seamlessly integrated strike guard, the boots are extremely lightweight, well ventilated over the entire boot surface, flexible, waterproof, and have a soft, non-slip hypoallergenic lining that reduces irritation and is ideal for horses with sensitive skin. Green Design means all materials are documented RoHS/REACH compliant. The boots use less glue, require less stitching/assembly, contain no PVC, no neoprene, and no EVA. The boots are ideal for dressage, turnout, trail, endurance riding, flatwork training and other general brushing protection needs.

100% Waterproof
Non-Slip Lining
Boots Do Not Absorb Water
Stay in Place/Do Not Slip

Ventilates and Cools Leg
Breathable Around Entire Leg
Heat Can Escape. Cool Air Can Enter
Keeps Tendons Cooler



Non Elastic Hook and Loop Provides Secure/Safe Fit Without Over Tightening or Stretching Like Elastic Can

100% Breathable Over Entire Boot Surface



Computerized Cross-Boxed Stitching Industrial Grade Hook and Loop Straps

Polyolefin Non-Slip Breathable Lining, Excellent Impact Absorption, Waterproof, Soft, Durable, Naturally Hypoallergenic, Non Neoprene, Will Not Irritate Skin, Resists Mold and Mildew Growth, Green Material, RoHS/REACH Compliant



Provides a clean, low profile glove-like fit. Can be used on Front or Hind legs

PRO MESH SERIES

variable flex Dressage/Splint/Brushing Boot



Low Profile Conforming Fit



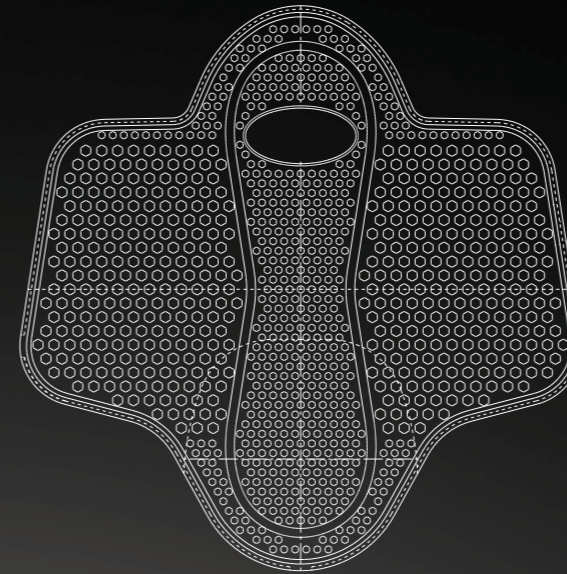
Sock Liner for Glove-Like Fit



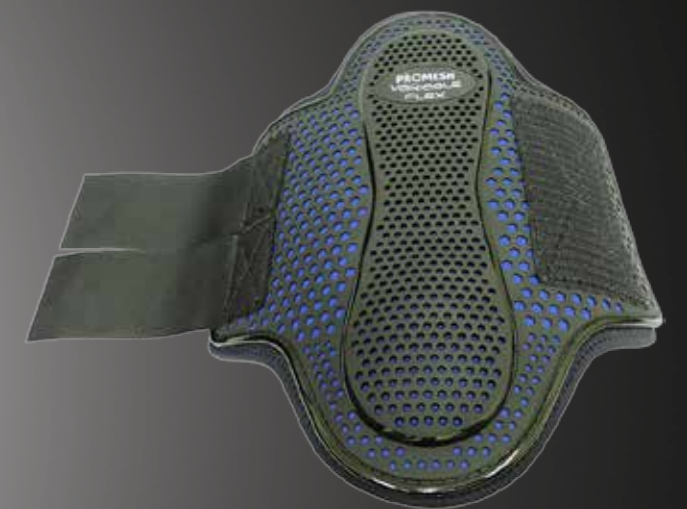
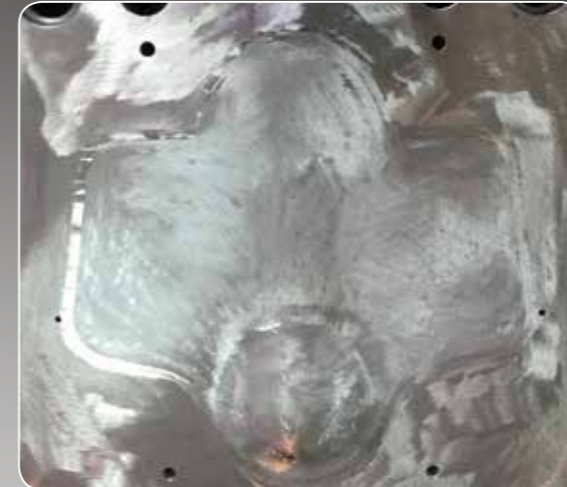
Boots Shape to Horse's Leg and Breath



Dressage/Splint/Brushing Boot **variable flex**



Advanced Design and Toolmaking Means Safety and Performance Product Features are Designed in from the Project Start.



**Innovative Technology.
Less Design is More**

SINOBLUE

PRO MESH SERIES

PRO MESH SERIES

pro mesh Hybrid JUMP Tendon Boot

Tendon Boot pro mesh Hybrid JUMP

Featuring State-of-the-Art Pro Mesh G3 Tendon boot outer shell with internal Pebax® strike guard, the Pro Mesh G3 Jump Tendon Boots bring cutting edge industrial design and advanced manufacturing to equestrian leg protection. The Hybrid name means the boots provide an optimum combination of the safety of a traditional hard shell Jump boot, along with the breathability, flexibility, light weight and comfort of a soft shell wrap style boot.

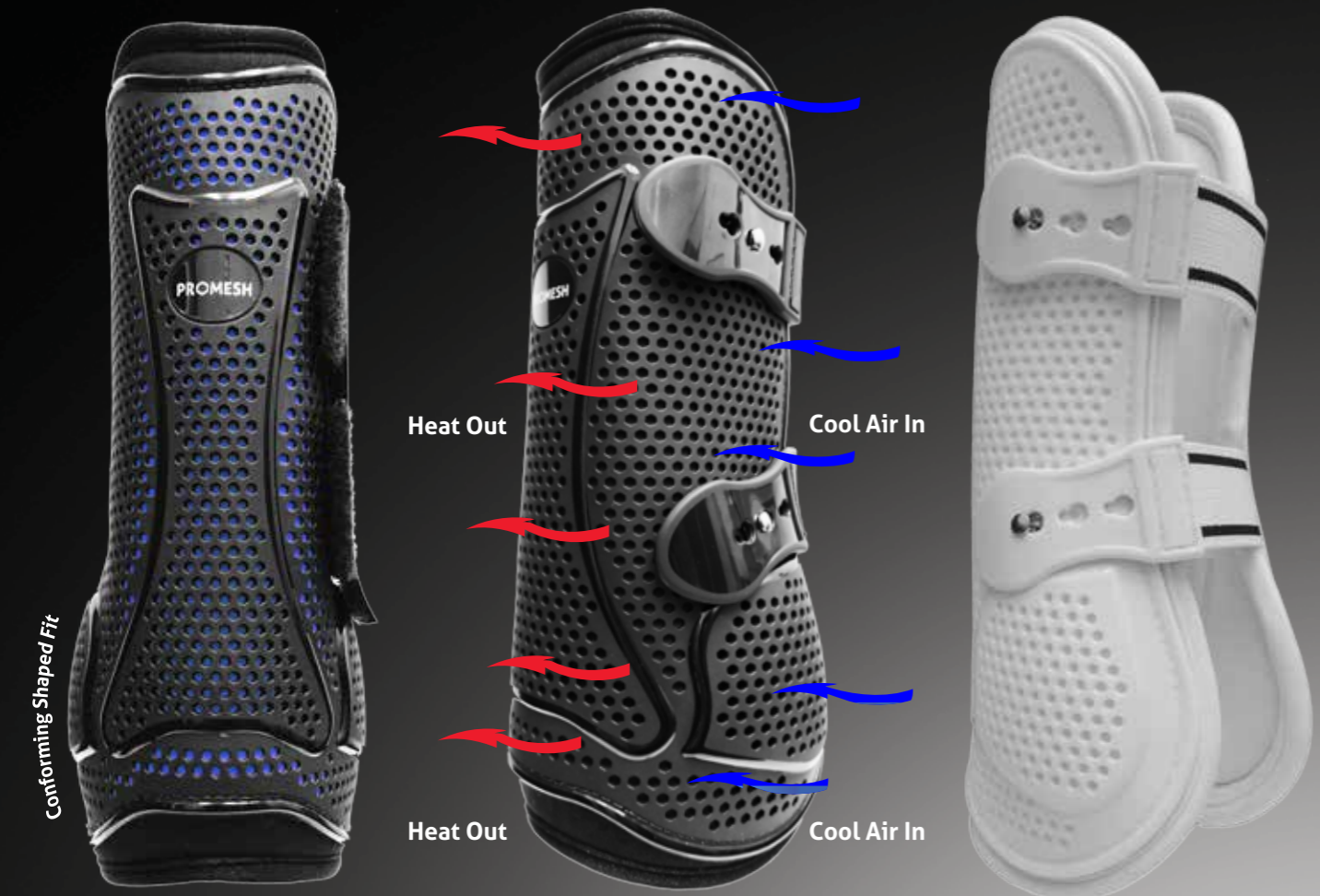
These boots were designed to meet or exceed requirements defined by the world's leading riders, grooms and leg protection experts. These requirements include: Excellent strike (penetration) and concussion protection, excellent breathability by allowing cooler air in, sweat to evaporate and heat to escape the horse's leg, excellent boot flexibility so tendon/joint movement is not restricted, lightweight and waterproof materials that do not absorb sweat/water, and of course a good fitting boot that does not slip or move and is comfortable for the horse.

SinoBlue went even further utilizing Green Product Design by using RoHS/REACH environmentally compliant materials, eliminating toxic glue and adhesives, using hypoallergenic foam lining and eliminating Neoprene/PVC/EVA. All this means the boots are good for your horse and better for the environment.

• Pro Mesh Hybrid Jump Tendon Boot

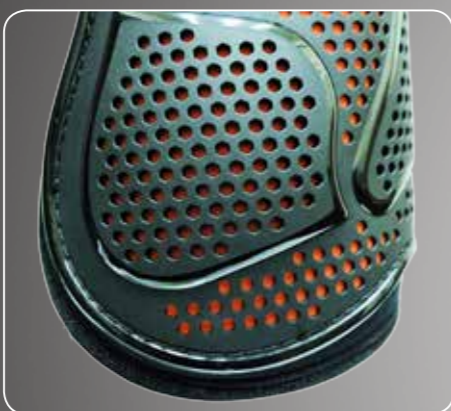
Full Size

SB63003

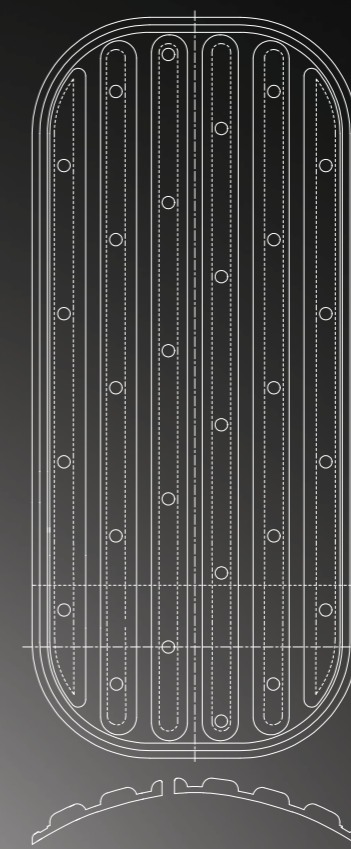
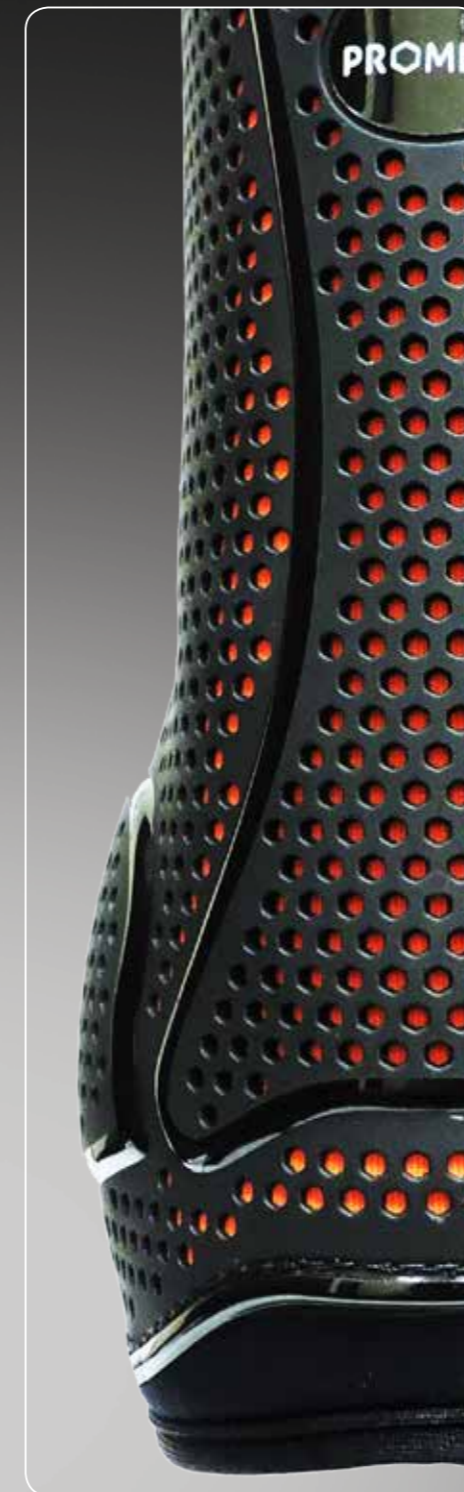


Waterproof Materials: Boots Will Not Absorb Sweat or Water

Breathable Pro Mesh Cool Air Can Enter at All Points Heat Can Escape at All Points



Fully Breathable Shaped Fetlock Area with Reinforced Strike Guards



Specially designed Pebax® strike guard is part of a multilayer protective design. Anatomically shaped, the strike guard is stiff where needed, but also flexible to conform to horses' legs.



Anatomically Shaped Conforming Fit

PRO MESH SERIES

PRO MESH SERIES

pro mesh GI Cross Country Front Boot

Cross Country Front Boot pro mesh GI

Tested, proven and used by numerous four star event riders, grooms and horses, these innovative cross country boots feature an outer layer of "Pro Mesh" TPU material for the ultimate combination of impact and abrasion protection, breathability, support and durability in a lightweight and flexible boot. The Pro Mesh outer layer allows air to flow both in and out of the boot at almost all points. This helps cool legs. Heat can escape, cooler air can enter. It also keeps out grit and sand to guard against rubbing. The boots use an Eco Friendly perforated polyolefin copolymer foam lining that absorbs shock, is durable and has good anti-slip properties for both wet and dry conditions. The boots conform to the leg to prevent slipping and debris from getting in. An integrated Pebax® strike guard in the flexor tendon area protects against concussion and penetration. The boots do not absorb water, are extremely strong and protective yet flexible to not restrict joint movement. The foam lining is naturally hypoallergenic and resists mold and mildew grow. Little or no glue is used in the boot construction. The foam and Pro Mesh TPU are both RoHS/REACH compliant and ideal for horses with sensitive skin.

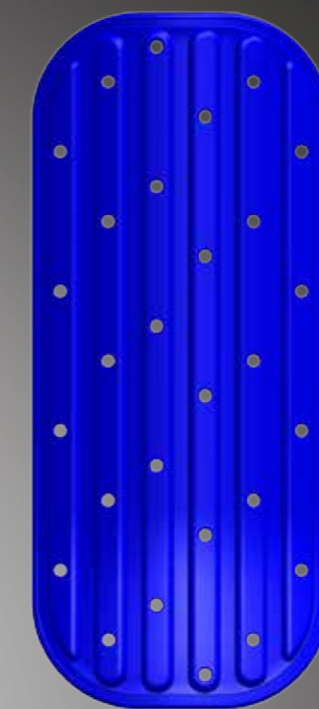
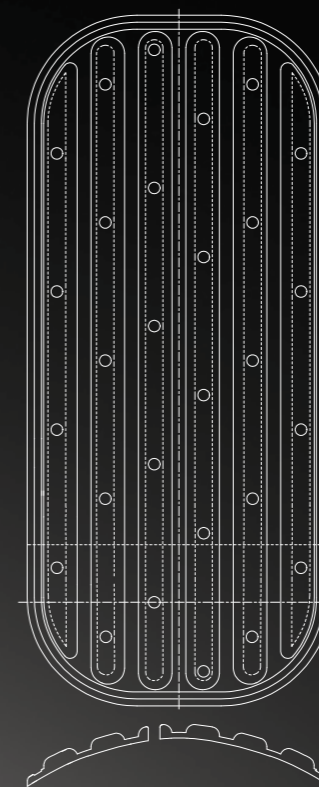


- Pro Mesh Provides Protection Around Entire Leg
- Breathable Design Keeps Legs Cooler
- Lightweight
- Boots Do Not Absorb Water
- Integrated Pebax® Strike Guard
- Boots are Flexible and Conform to the Horse's Leg
- Boots Do Not Slip in Both Wet and Dry Conditions

- XC1 Boot Front Black SB63218 BK
- XC1 Boot Front White SB63218 WHT
- XC2 Boot Hind Black SB63217 BK
- XC2 Boot Hind White SB63217 WHT
- Sizes: S, M, L
- Colors: (For Pro Mesh Outer Layer): Black, White. Other colors by request. We can match any Pantone color.



Certified
BASF® TPU
German Quality



Specially designed Pebax® strike guard on the inside of the boot in the flexor tendon area is part of a multilayer protective design. Anatomically shaped, the strike guard is stiff where needed, but also flexible to conform to horse's leg. Pebax is lightweight and will not shatter or splinter like many hard plastics and carbon fiber can.

PRO MESH SERIES

PRO MESH SERIES

pro mesh G2 Cross Country Front Boot

Cross Country Front Boot **pro mesh G2**

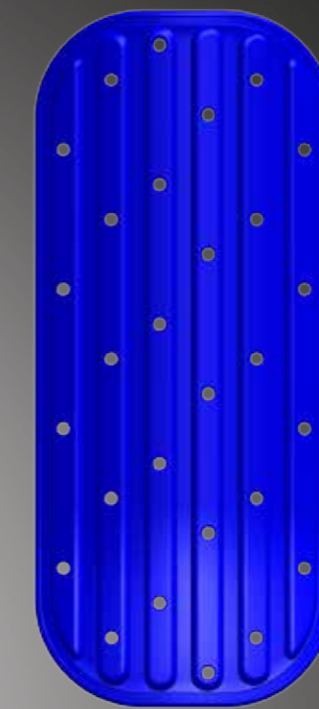
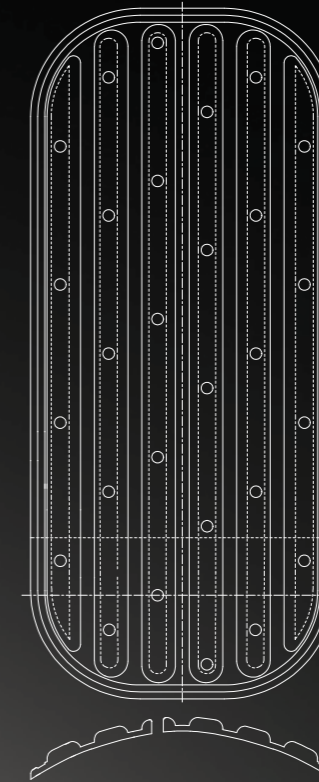
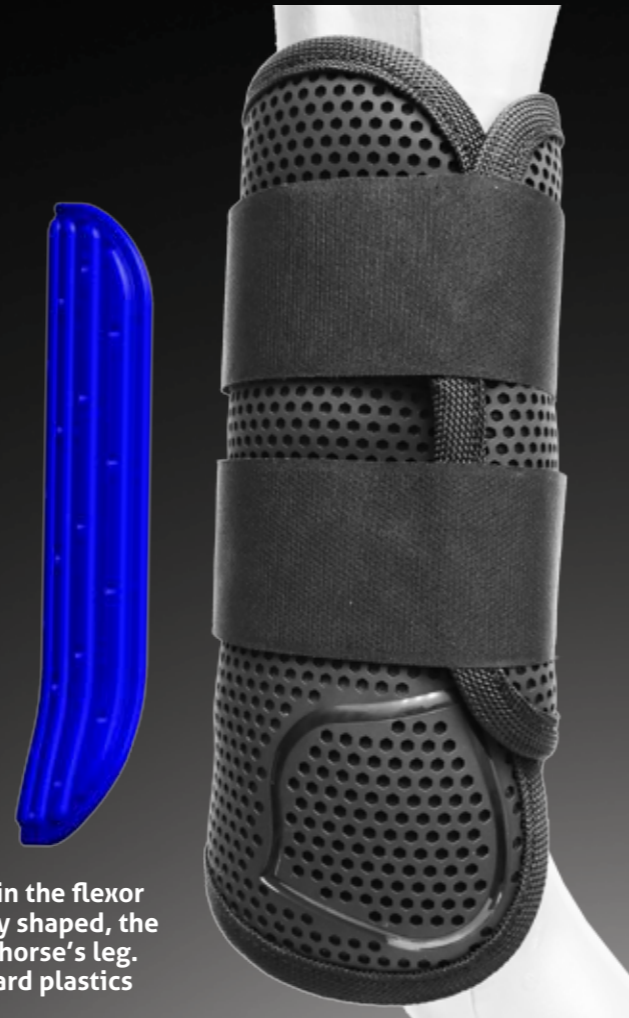
Certified
BASF® TPU
German Quality

Pro Mesh G2 Cross Country Front boots build upon the already successful Pro Mesh G1 Series XC boots by protecting the world's top Event horses. Improvements include:

- New Integrated Pebax® Strikeguard. Stronger Shaped Design
- Shaped Fetlocks: Seamless Design, More Conforming Fit
- Keeps Dirt/Debris Out Better
- Integrated Fetlock Strike Area Improves Impact Protection
- Improved/Stronger Waterproof Bonded Stitching
- Excellent Penetration and Concussion Protection
- Breathable - Heat Can Escape, Cool Air Can Enter
- Excellent Flexibility
- Ergonomic Fit and Comfortable
- Lightweight
- Will Not Absorb Water or Sweat
- Hypoallergenic Inner Polyolefin Foam Lining
- Green Product Design - RoHS and REACH Compliant
- No Neoprene, No PVC

- XC G2 Boot Front Black SB63260 BK
- XC G2 Boot Front White SB63260 WHT

Specially designed Pebax® strike guard on the inside of the boot in the flexor tendon area is part of a multilayer protective design. Anatomically shaped, the strike guard is stiff where needed, but also flexible to conform to horse's leg. Pebax is lightweight and will not shatter and splinter like many hard plastics and carbon fiber can.



Conforming Shaped Fit



PRO MESH SERIES

PRO MESH SERIES

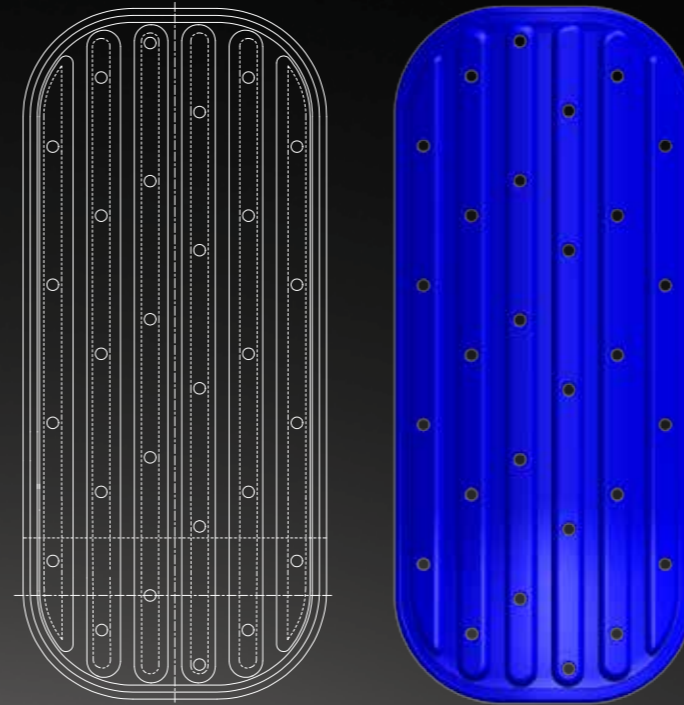
pro mesh G1 Cross Country Hind Boot

Cross Country Hind Boot pro mesh G1

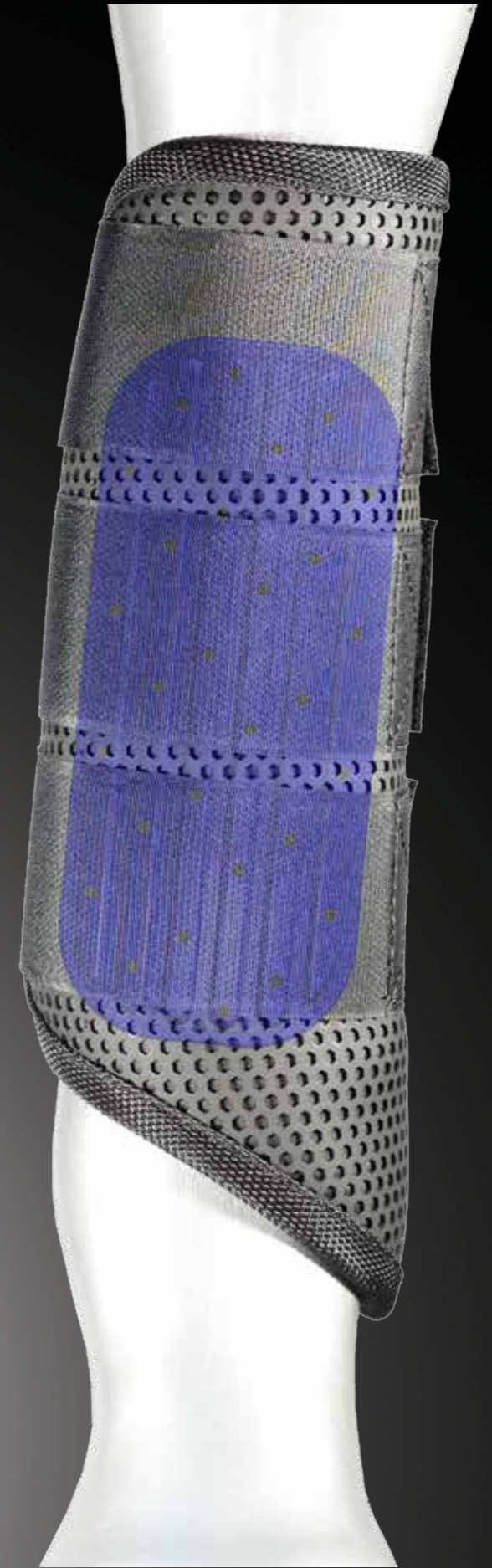
These innovative cross country boots feature an outer layer of "Pro Mesh" TPU material for the ultimate combination of impact and abrasion protection, breathability, support and durability in a lightweight and flexible boot. The Pro Mesh outer layer allows air to flow both in and out of the boot at almost all points. This helps cool legs. Heat can escape, cooler air can enter. It also keeps out grit and sand to guard against rubbing. The boots use an Eco Friendly perforated polyolefin copolymer foam lining that absorbs shock, is durable and has good anti-slip properties for both wet and dry conditions. The boots conform to the leg to prevent slipping and debris from getting in. An integrated Pebax® strike guard in the boot front protects against impacts. The boots do not absorb water, are extremely strong and protective yet flexible to not restrict joint movement. The foam lining is naturally hypoallergenic. No glue is used in the boot construction. The foam and Pro Mesh TPU are both RoHS/REACH compliant and ideal for horses with sensitive skin.

- Pro Mesh Provides Protection Around Entire Leg
- Breathable Design Keeps Legs Cooler
- Lightweight
- Boots Do Not Absorb Water
- Integrated Pebax® Strike Guard
- Boots are Flexible and Conform to the Horse's Leg
- Boots Do Not Slip in Both Wet and Dry Conditions

- XC G1 Boot Hind Black SB63217 BK
- XC G1 Boot Hind White SB63217 WHT
- Sizes: M, L
- Colors: (For Pro Mesh Outer Layer): Black, White. Other colors by request. We can match any Pantone color.



Specially designed Pebax® strike guard on the inside of the front of the hind leg boot is part of a multilayer protective design. Anatomically shaped, the strike guard is stiff where needed, but also flexible to conform to horses' leg. Pebax is lightweight and will not shatter and splinter like many hard plastics and carbon fiber can.



PRO MESH SERIES

PRO MESH SERIES

pro mesh Dressage Sport Boot

Dressage Sport Boot **pro mesh**

Pro Mesh TPU material literally breathes new life into the traditional Dressage/Sport boot by replacing the usually closed (non-breathable) outer layer with an outer layer of tough, durable and fully breathable "Pro Mesh" TPU. The Pro Mesh outer layer is more flexible, has more strength, and is more abrasion, tear and cut resistant than sheet PVC. Additionally, the boot conforms better to leg contours. In addition to letting heat escape and air in, Pro Mesh keeps sand and grit out.

Features:

- Pro Mesh TPU Protective Outer Layer
 - Non Neoprene foam or fleece Lining
 - Strong Velcro Closures w/Double Elastic
-
- Dressage/Sport Boot Fleece Black SB63180C BK
 - Dressage/Sport Boot Fleece White SB63180C WHT
 - Dressage/Sport Boot Foam Black SB63180B BK
 - Dressage/Sport Boot Foam White SB63180B WHT
 - Sizes: S, M, L and XL

Note: Can fit front or hind leg. Most horses use one size larger for hind. E.g. Front M/Hind L, etc.

Note: Optional Lining Material Available By Request



PRO MESH SERIES

pro mesh Brushing and Fetlock Boot

These boots offer great 360 degree fully breathable protection from the Pro Mesh outer layer which is better than neoprene only boots. They come with our exclusive non-slip perforated Polyolefin foam as standard inner lining or optional neoprene/fleece lining. They do not slip, do not absorb water, are 100% breathable, flexible and strong. Double locking (or single strap) velcro closures with doubled elastic ensure a secure fit. Tendon boots can be used on either front and hind legs, or use front brushing boots with fetlocks in the rear.

Features:

- Pro Mesh TPU Protective Outer Layer
- Durable Strike Guard
- Strong Double Locking Velcro Closures

- Front Brushing Boot SB63546
- Sizes: S, M, L, XL

Note: Use One Size Larger for Hind

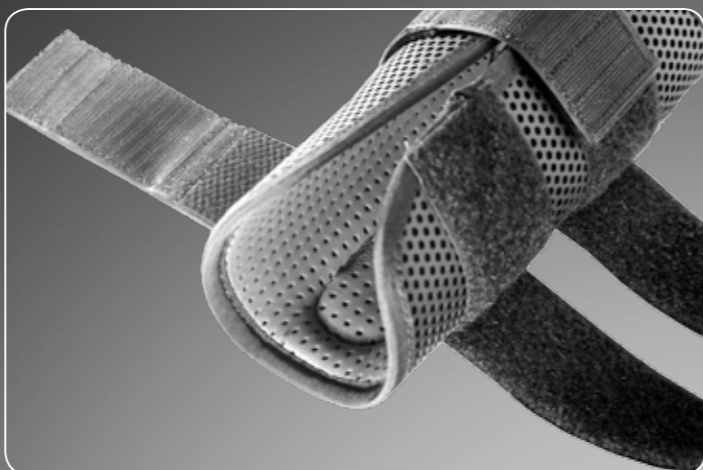
- Rear Fetlock SB63547
- Sizes: S, M/L

Note: M and L share same size Fetlock boot

Note: Optional Lining (Neoprene) Material Available By Request



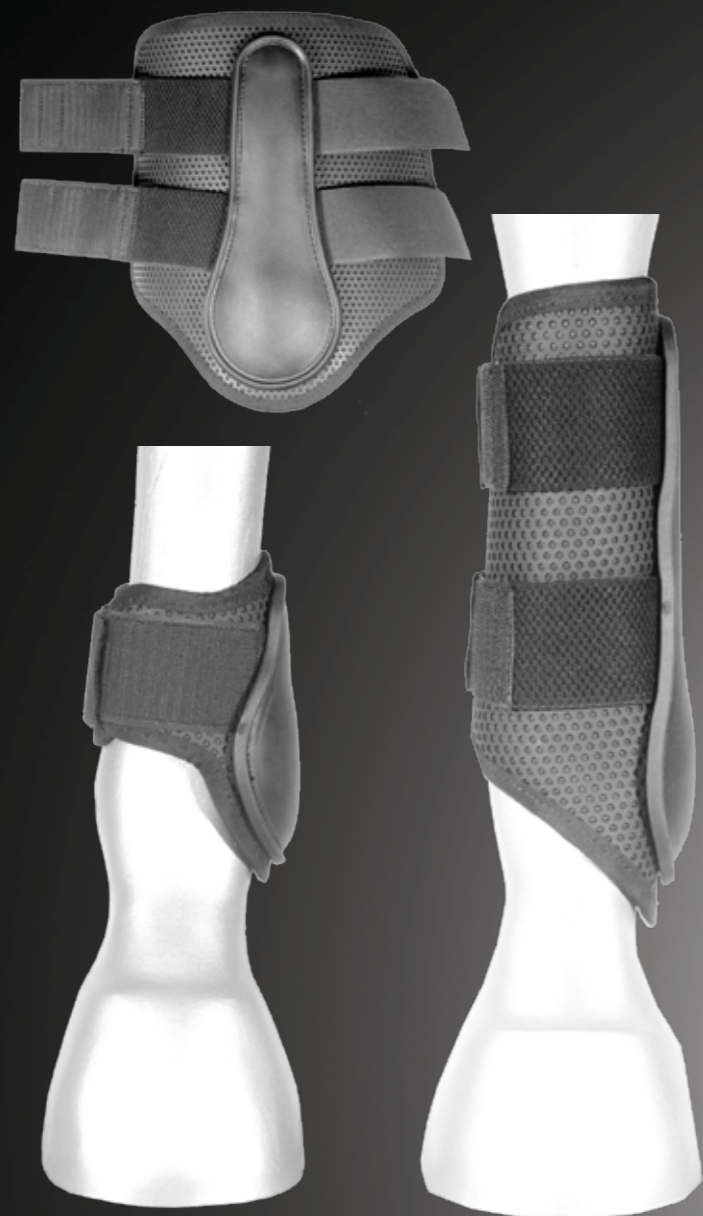
Doubled Elastic with Double Locking Fasteners



Breathable Design, Keeps Sand Out



Fetlock Boot with Protective Strike



The Pro Mesh Over Reach boot is regarded as one of the most durable and protective boots in the industry. The extremely strong Pro Mesh BASF® TPU outer layer is a tear proof material that makes these boots especially tough and able to take daily abuse. A no-turn knob prevents the boot from spinning.

Features:

- Pro Mesh TPU Protective Outer Layer
- Tough Rear Strike Guard, Contoured to Stay in Place
- Shock Absorbent Inner Lining, Double Locking Velcro
- No-Turn Soft Knob to Prevent Spinning

- Pro Mesh Over Reach Black SB63532 BK
- Pro Mesh Over Reach White SB63532 WHT
- Pro Mesh Over Reach Black Merino SB63536 BK
- Pro Mesh Over Reach White Merino SB63536 WHT
- Sizes: S, M, L, XL



PRO MESH SERIES

pro mesh Over Reach Boot



Pro Mesh Outer Layer is Extremely Durable

